



48 George Street, London, W1U 7DY

Located in the heart of Marylebone, 48 George St is an ideal space for tenants looking for a simple solution to their office needs. In addition to being located in one of central London's most desired districts, the building has huge windows and good natural light. The self-contained 2nd floor features all one needs: fully furnished space for up to 16, 2x boardrooms, 2x exec offices, break out space and more.



24hr access



Air-con



Lounge area



Dedicated IT line



Disabled access



Furnished



Kitchen



Lifts



Meeting rooms



Reception

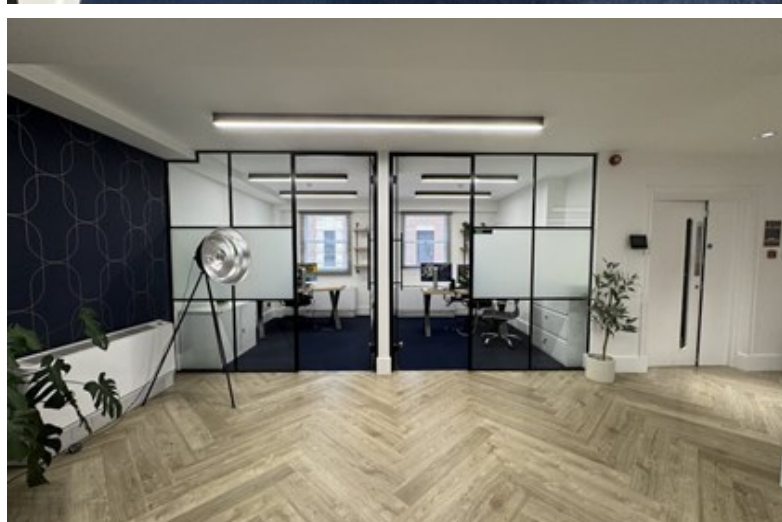
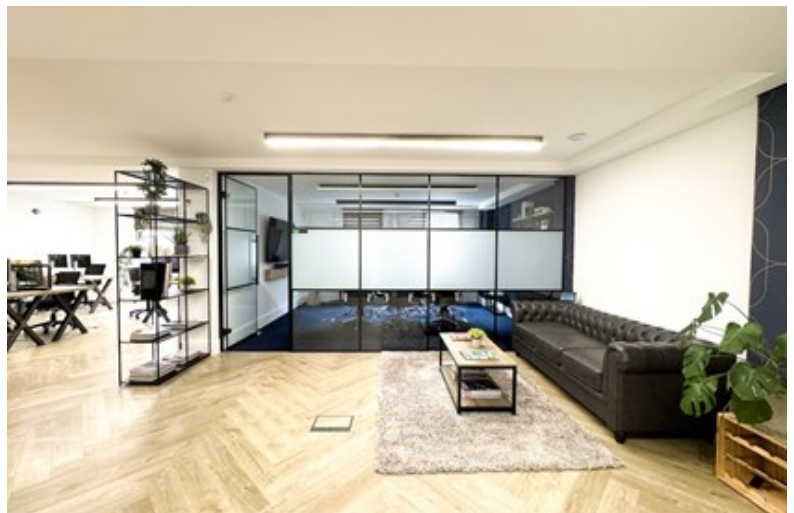


EPC Rating: C



Image gallery

[More Images](#)





Nearest transport

Tube

Marble Arch
8 minute walk

Tube

Bond Street
9 minute walk

Tube

Baker Street
8 minute walk

Train

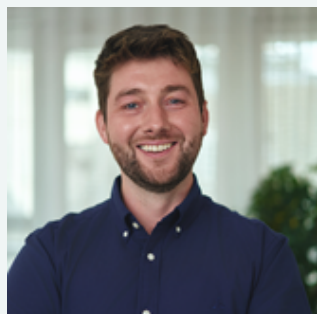
Marylebone
14 minute walk

Why we love...

48 George Street is an ideal space for tenants who are looking for an easy office solution to their office requirement!



Dan
Co-Head Workthere UK



Tom Leahy
Co-Head of Workthere UK

✉ tom.leahy@workthere.com

☎ 07955 147734



Jodie Burwood
Senior Landlord Advisory

✉ jodie.burwood@workthere.com

☎ 07939 890689



Holly Pollock
Senior Landlord Advisory

✉ holly.pollock@workthere.com

☎ 07946 609706

Floor Information

[Download floorplan](#)

	Monthly price	Max Desks	Size (sqft)	Price per sqft	Availability	Term
2nd Floor	£32,463	16	1,855	£210	Now	24m+